



Description

The electric bicycle holds a new potential, especially in cities with high traffics and represents a huge demand in multiple areas and touristic destinations. The electric vehicle is an ideal and eco-friendly means of transportation.

Sunpark® has developed a removable metal canopy designed with hot-rolled tubular beams of variable thickness and section, with welded or bolted joints.

The steel structure is painted, hot-dip galvanized, or galvanized and painted.

It can be fixed using chemical anchors, making foundation footings unnecessary.

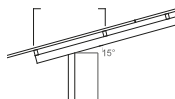
Our photovoltaic kits are delivered turnkey, with components protected and elevated to minimize vandalism or early degradation. They include manufacturing, supply, assembly, and commissioning of the photovoltaic installation, with the option to purchase only the structure, which can include design and calculation if non-standard dimensions are required.

Additionally, they are compatible with all types of photovoltaic panels. The integrated software systems allows monitoring of optimal performance from anywhere, ensuring continuous and uninterrupted production.



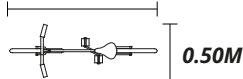
Technical specifications

0.8M



Standard distance between purlins

1.76M



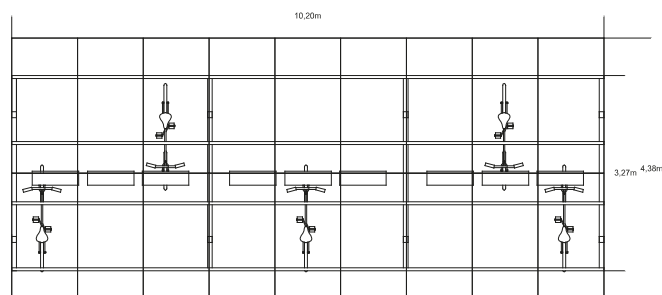
Standard dimensions per standard place



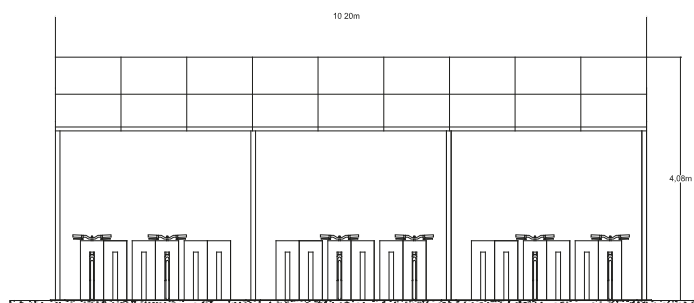
Compatible with all type of Photovoltaic panel



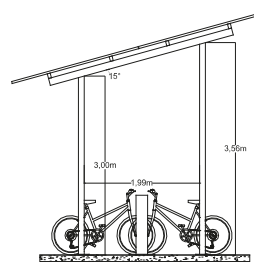
Plans



Superior view



Facial view



Lateral view



Certificates



C.T.E
SPANISH
BUILDING CODE



Certificate of origin
30% of the energy used in the manufacturing of our structures is of renewable origin.



Versatility

The structure of the canopy is compatible with all type of solar panel and can be joined by chemical anchor. It helps avoid the need for foundation footings and facilitates the implementation in distinct areas.



Sostenibility

The electric bicycles and the photovoltaic kits are contributing to an eco-responsible mobility and are helping generate renewable energy. Speaking of which, they are leading to the reduction of the carbon footprint in urban and touristic areas.



Safety

The metallic canopy and the photovoltaic kits are designed with resistant materials and its components are elevated to avoid any act of vandalism or early degradation. This helps guarantee much more sustainability and protection.

